

FIELD-APPLIED SILICONE CORNER BEADS AND SILICONE BAND FORCED DOWN ALONG SIDE OF DSM AS SHOWN - BOTH SIDES

APP. 3/4"



TYPICAL CORNER DETAIL NOT-TO-SCALE

MIGUTRANS FS SERIES (BY EMSEAL)

DOUBLE-SIDED DSM SYSTEM (BY EMSEAL)

EMSEAL HIGH PERFORMANCE ELASTOMERIC POLYURETHANE NOSING MATERIAL

CHEMICAL ANCHORING SYSTEM

EPOXY SETTING BED

FACTORY-APPLIED AND CURED TRAFFIC GRADE SILICONE FACING

EPOXY ADHESIVE 820 (BY EMSEAL)

DOUBLE SIDED OPTIONAL (BY EMSEAL)

DSM IMPREGNATED FOAM (BY EMSEAL)

NEW WALL

EXISTING WALL

ANCHORS USED W/TERM BAR

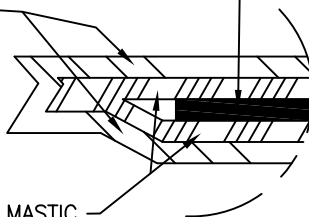
HIGH-NITRILE RUBBER/PVC SIDE SHEET FACTORY WELDED

BG SYSTEM JOINT

LAGGING

HIGH-NITRILE RUBBER/PVC SIDE SHEET FACTORY WELDED

VOLTEX WATERPROOFING (BY OTHERS)



BENTOSEAL GEL MASTIC ENCAPSULATING SIDE SHEETS (BY OTHERS)

ROCK/EARTH

EMSEAL JOINT SYSTEMS LTD.

EMSEAL DSM, BG & FS SYSTEM (DECK TO WALL)

THIS DOCUMENT CONTAINS INFORMATION OF A CONFIDENTIAL NATURE UNAVAILABLE TO THE PUBLIC AND IS PROPRIETARY TO EMSEAL CORPORATION. ANY UNAUTHORIZED USE WILL BE PROSECUTED. THIS DRAWING IS PROTECTED BY COPYRIGHT, THE RIGHT TO REPRODUCE IN ANY FORM BEING THE EXCLUSIVE RIGHT OF EMSEAL CORPORATION. ANY UNAUTHORIZED REPRODUCTION WHETHER IN TWO OR THREE DIMENSIONS WILL BE PROSECUTED.

DRAWN BY: TAB	DATE: 10/09/08	SCALE: N.T.S.	SHEET No: 1 OF 1
------------------	-------------------	------------------	---------------------

PART NUMBER: DSM-DS_DD_CONC_FS_INTERIOR_ON_TOP_BG_INSIDE_CORNER_BELOW_VOLTEX_BENTOSEAL