

FIELD-APPLIED SILICONE CORNER BEADS AND SILICONE BAND FORCED DOWN ALONG SIDE OF DSM AS SHOWN - BOTH SIDES



TYPICAL CORNER DETAIL NOT-TO-SCALE

EPOXY ADHESIVE 820 (BY EMSEAL)

DOUBLE SIDED DSM (BY EMSEAL)

DOUBLE-SIDED DSM SYSTEM (BY EMSEAL)

FACTORY-APPLIED AND CURED TRAFFIC GRADE SILICONE FACING

DSM IMPREGNATED FOAM (BY EMSEAL)

CHEMICAL ANCHORING SYSTEM

EPOXY LEVELING BED

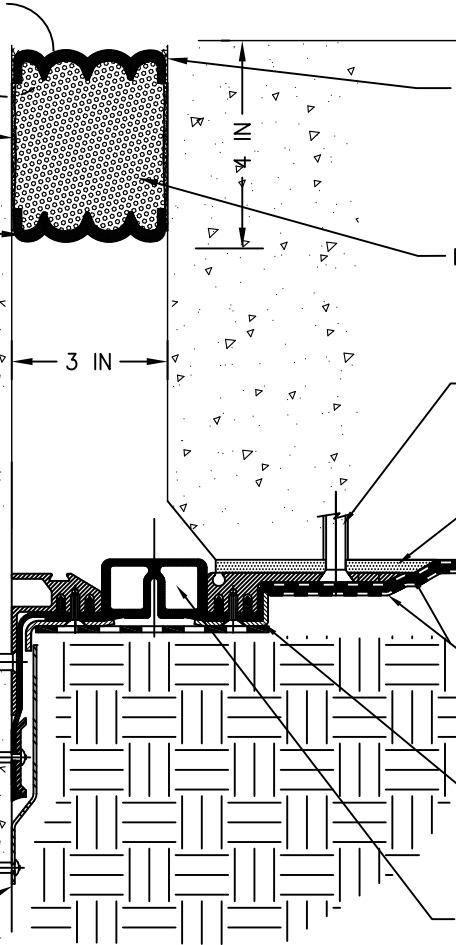
MIGUTAN FLASHING SHEET FULLY-ADHERED TO OR EMBEDDED IN DECK WATERPROOFING

DECK WATERPROOFING OVERLAY FULLY ADHERED TO MIGUTAN FLASHING SHEET

STAINLESS STEEL CAPPING STRIP

.12 IN (3mm) THICK - 73 SHORE A DUROMETER SANTOPRENE SEALING GLAND

FLASHING - BY OTHERS



EMSEAL JOINT SYSTEMS LTD.

EMSEAL DSM SYSTEM & FP 110/25

THIS DOCUMENT CONTAINS INFORMATION OF A CONFIDENTIAL NATURE UNAVAILABLE TO THE PUBLIC AND IS PROPRIETARY TO EMSEAL CORPORATION. ANY UNAUTHORIZED USE WILL BE PROSECUTED. THIS DRAWING IS PROTECTED BY COPYRIGHT, THE RIGHT TO REPRODUCE IN ANY FORM BEING THE EXCLUSIVE RIGHT OF EMSEAL CORPORATION. ANY UNAUTHORIZED REPRODUCTION WHETHER IN TWO OR THREE DIMENSIONS WILL BE PROSECUTED.

DRAWN BY: TAB	DATE: 10/08/08	SCALE: N.T.S.	SHEET No: 7 OF 11
------------------	-------------------	------------------	----------------------

PART NUMBER:
DSM-DS_3_DD_CONC_FP_110_25_DW_INSIDE_CORNER_BELOW