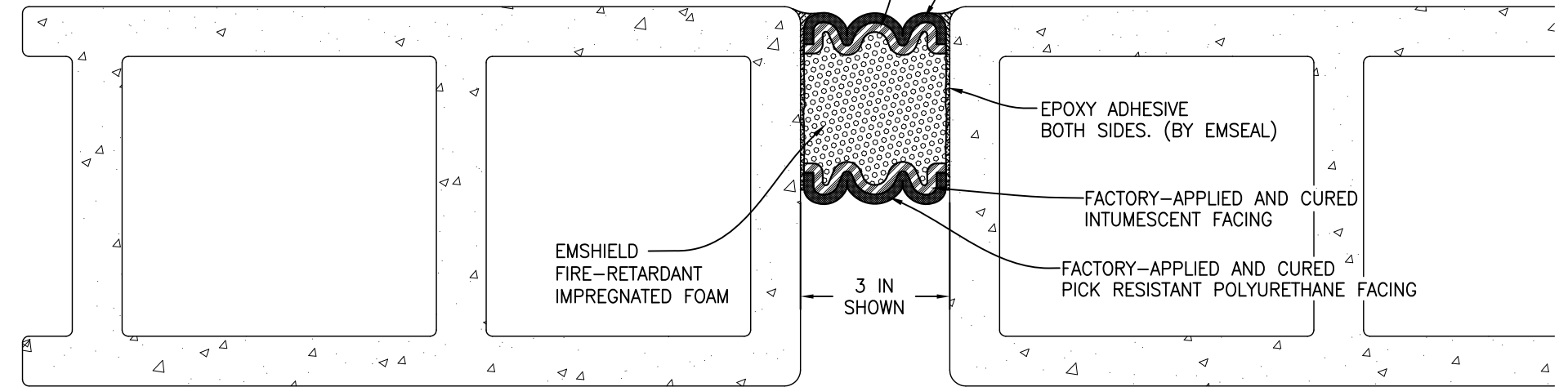
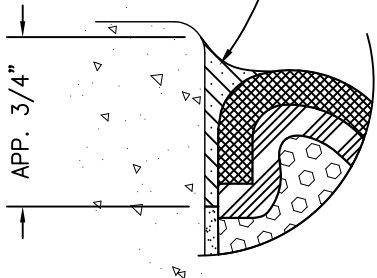


FIELD-APPLIED POLYURETHANE SEALANT BAND AND CORNER BEADS FORCED DOWN ALONG SIDE OF EMSHIELD SECURITY SEAL AS SHOWN - BOTH SIDES (POLYURETHANE SUPPLIED BY EMSEAL)

NOTE:  
INJECTED SEALANT BANDS AND CORNER BEADS - REQUIRED ON EXTERIOR FACING APPLICATIONS, OPTIONAL ON INTERIOR APPLICATIONS



JOINT GAPS FROM 1 3/4 TO 6 INCHES (45-150mm)  
MOVEMENT: ±25% (TOTAL 50%) OF NOMINAL MATERIAL SIZE

# EMSEAL JOINT SYSTEMS LTD.

## SECURITYSEAL SSW 2 - CONTINUOUS WALL TO WALL

THIS DOCUMENT CONTAINS INFORMATION OF A CONFIDENTIAL NATURE UNAVAILABLE TO THE PUBLIC AND IS PROPRIETARY TO EMSEAL CORPORATION. ANY UNAUTHORIZED USE WILL BE PROSECUTED. THIS DRAWING IS PROTECTED BY COPYRIGHT, THE RIGHT TO REPRODUCE IN ANY FORM BEING THE EXCLUSIVE RIGHT OF EMSEAL CORPORATION. ANY UNAUTHORIZED REPRODUCTION WHETHER IN TWO OR THREE DIMENSIONS WILL BE PROSECUTED.

DRAWN BY: TAB	DATE: 01/11/10	SCALE: N.T.S.	SHEET No: 1 OF 1
------------------	-------------------	------------------	---------------------

PART NUMBER:  
SSW 2 - CON W-W X SECTION - 002

A	03/02/10	TAB	GENERAL REVISIONS
---	----------	-----	-------------------